

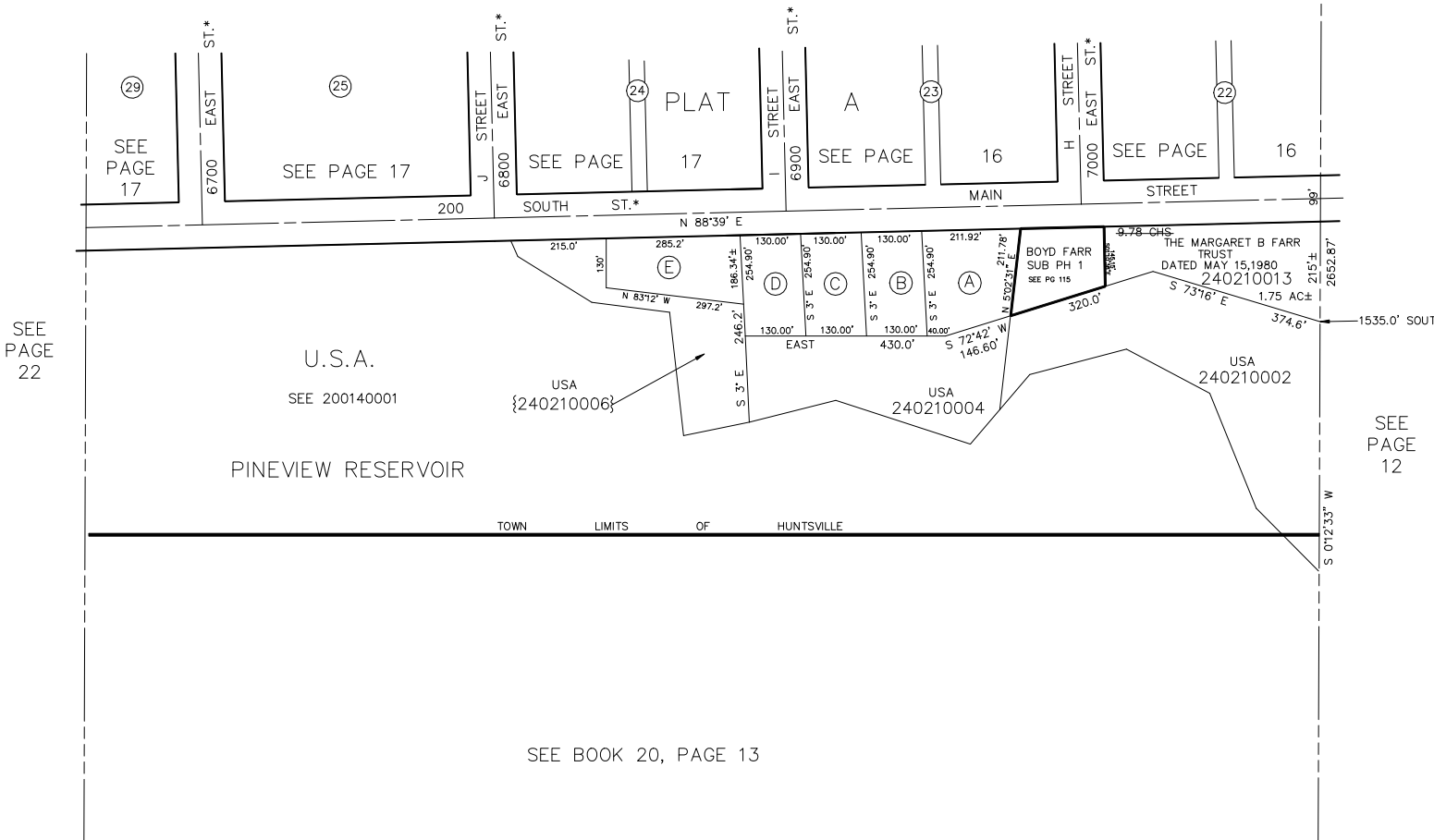
PART OF N.E. 1/4
SECTION 13, T.6N., R.1E., S.L.B. & M.

IN TOWN OF HUNTSVILLE

SCALE 1" = 200'

TAXING UNIT: 35

N.E. COR OF
SEC. 13



SEE PAGE 22

SEE PAGE 12

SEE BOOK 20, PAGE 13

(A)	THE MYRNA HUBERT REVOCABLE TRUST 240210003 1.07 AC±	(B)	RICHARD H MARTY & NANCY E MARTY TRUSTEES 240210009 33,092 SQ FT	(C)	ROCK E HARPER & WF SANDRA J 240210008 33,092 SQ FT
(D)	D RAINER KOLB 240210007 33,092 SQ FT	(E)	GLEN ASHTON LLOYD & WF 240210005		

*NOTE: STREET NUMBERS ACCORDING TO COUNTY SURVEYOR.